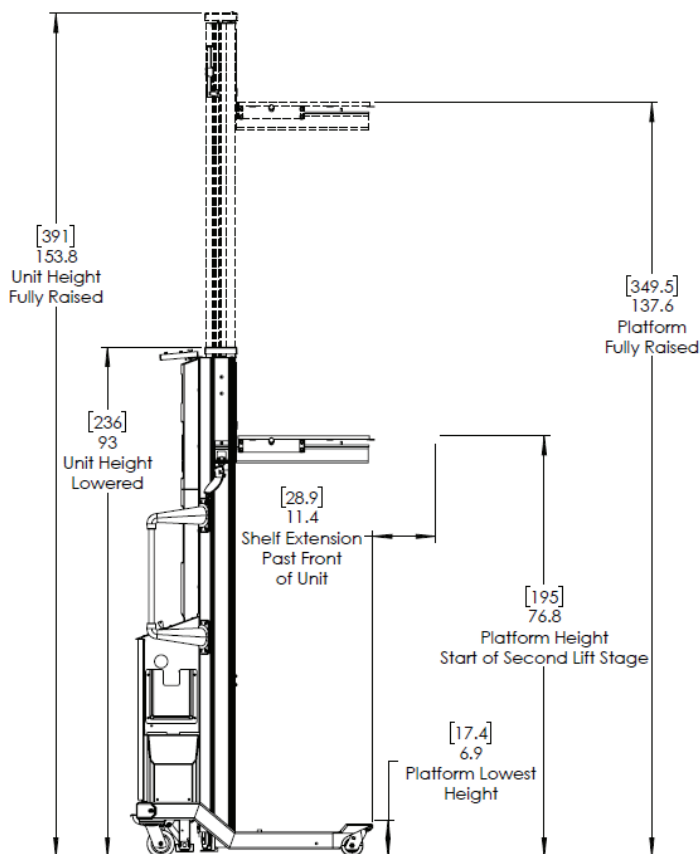




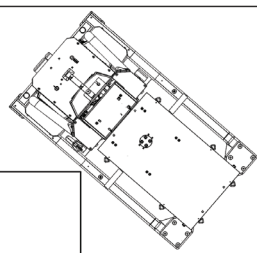
SL-500FXL TOWERLIFT™

Extended Height Data

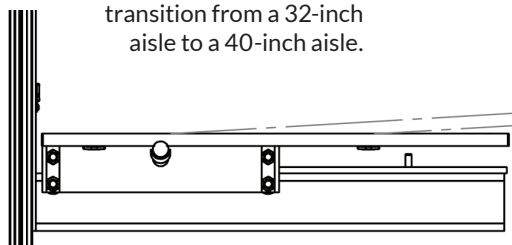
Center Lift



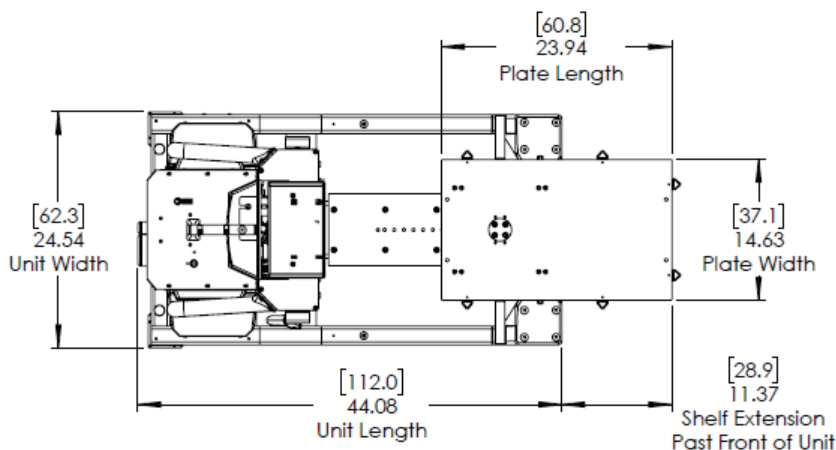
Dimensions: [cm]
in



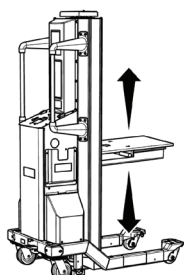
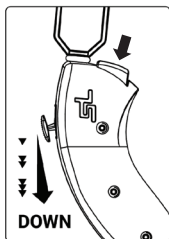
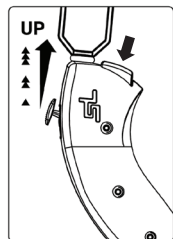
The lift can smoothly transition from a 32-inch aisle to a 40-inch aisle.



Adjustable Platform Angle

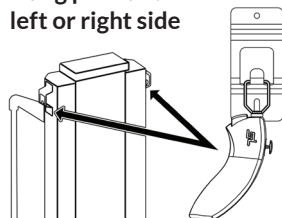


Push joystick to move platform

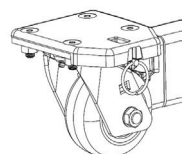


- ✓ The pendant can hang on either side of the lift.
- ✓ The pendant has progressive speed control for precise equipment positioning.
- ✓ The safety button must be held throughout the operation for safe use.

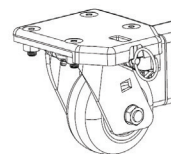
Hang pendant on left or right side



Front Caster Swivel Lock Operation



CASTER UNLOCKED
Key turned horizontally



CASTER LOCKED
Key turned vertically

Capacity

| DESCRIPTION | US (lb) | METRIC (kg) |
|-----------------------------------|---------|-------------|
| Platform (Platform Retracted) | 500 | 227 |
| Platform Edge (Platform Extended) | 350 | 159 |

Weight

| DESCRIPTION | US (lb) | METRIC (kg) |
|-------------------|---------|-------------|
| Total unit weight | 672 | 305 |
| Shipping weight | 795 | 361 |